

A photograph of an industrial facility, likely an oil refinery or gas processing plant, at sunset. The sky is a mix of orange, yellow, and blue. The facility's structures, including tall distillation columns and piping, are silhouetted against the bright sky. The lights from the facility are reflected in a body of water in the foreground. The image is overlaid with a pattern of semi-transparent, overlapping diamond shapes in shades of blue and grey.

INDUSTRIAL PUMPS OIL & GAS

WWW.PENTAIR.COM

Onshore Applications

From discovery to delivery, Pentair helps you make your processes safe, efficient, and environmentally friendly by providing a versatile line of pumps for onshore applications, helping solve your onshore pumping needs. From reciprocating pumps, horizontal split-case and process pumps we have the solutions to fit your needs.

Years of proven performance makes Pentair the clear choice for your onshore Oil and Gas applications.

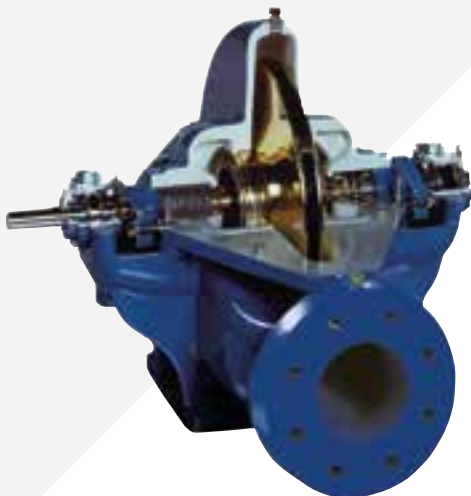


Pipe Line Booster and High Pressure Pumps

The [Pentair](#) family of reciprocating pumps comes in a variety of materials of construction to handle the toughest of your high pressure applications.



[Pentair's](#) ANSI B73.1 standard dimensional process pump is a versatile workhorse. This pump comes in a variety of materials of construction from 316SS (stainless steel) to titanium. Capacities to 5,600 GPM with heads to 550 feet, this pump is also ideal for many chemical and transfer fluid applications.



[Pentair's](#) horizontal split-case pumps have capacities up to 75,000 GPM and heads to 1,200 feet. These pumps can operate under a multitude of services of general liquid pumping applications.



[Pentair's](#) multi-stage vertical turbine pump is capable of handling up to 40,000 GPM with heads up to 1,500 feet. With the flexibility of various options to meet your demands, this is an excellent product for the demanding environment within the salt water disposal process.



Offshore/Marine Applications

Offshore oil and gas production place full trust on quality pumps to perform. Proven performance is what Pentair provides.

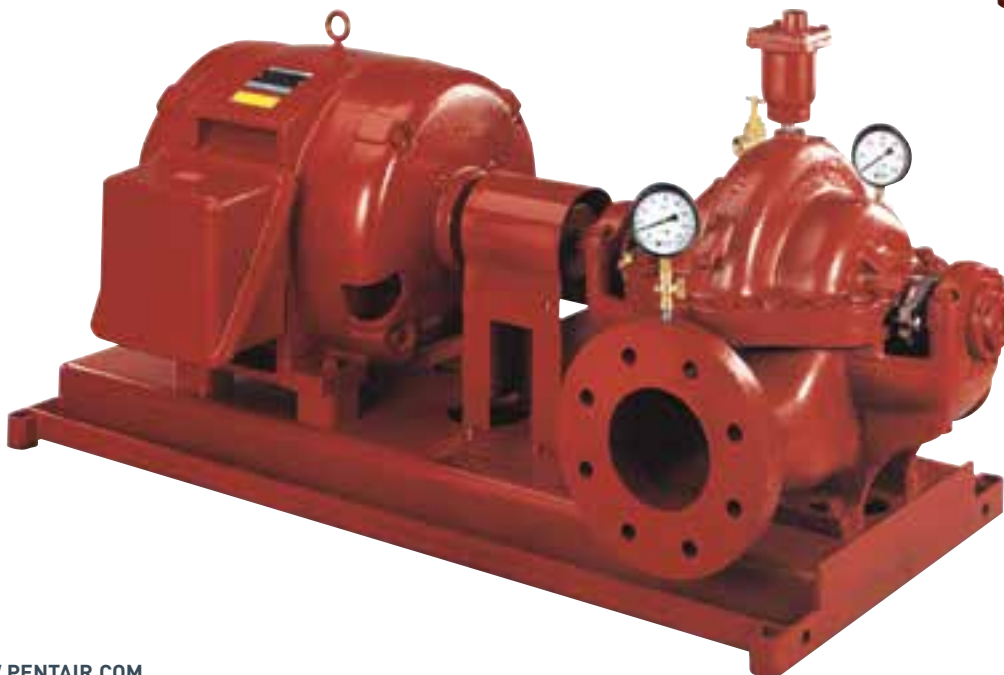
Our industrial vertical inline, horizontal split-case, vertical split-case, vertical turbine pumps provide quality solutions for your needs.

Years of field proven performance can attribute to our continued success and ability to provide the industry with some of the best pumps available for use in the offshore applications. Feel safe and secure by putting your trust in Pentair.



Fire Protection Pumps

Pentair offers a complete line of pumps to meet your fire protection needs: End suction, vertical inline, horizontal split-case, vertical split-case, and vertical turbine pumps. Offering both electric and diesel drives, we can also supply complete packaged systems to custom fit your requirements. All fire pumps and packages are built to NFPA 20 and NEC standards with UL Listed/FM approved components.





Production Applications

Pentair has a pump solution when it comes to your oil and gas production needs. From lifting sea water, to utility functions, to safety and fire protection we have you covered. Decades of continuing quality form some of the most trusted brands in the Industrial Pump Industry.

Pentair provides a variety of performance proven pumps designed for oil field, upstream and downstream facilities. These include high capacity vertical turbine and horizontal split-case pumps for transfer services, high pressure water injection services and all miscellaneous production related services.

These services include the following areas:



Utility Water Pumps

Pentair's horizontal split-case pumps have capacities up to 75,000 GPM and heads to 1,200 feet. These pumps can operate under a multitude of services of general liquid pumping applications.

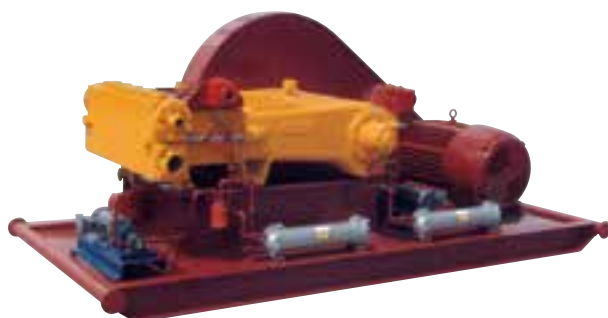
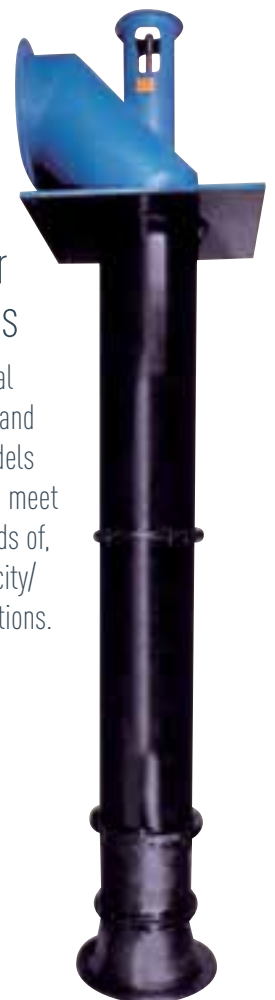


Contact your local sales representative for availability.

Pentair horizontal multistage pumps are available in pressures up to 2000psi (1400 mtc) and come in a variety of materials. This pump is ideal for surface pumping due to the smaller footprint, improved efficiencies, and lower maintenance costs than other competing HPump systems.

Sea Water Lift Pumps

Pentair's vertical turbine pumps and mixed flow models are designed to meet the unique needs of, high flow capacity/ low head conditions.



Salt Water Injection Operations

Pentair reciprocating pumps are built to last, handling continuous duty 24-hour operation. These units can handle up to 340 hp at 3600 psi.





Oil and Gas

The Pentair family of pump products has been serving the oil and gas industry for well over 90 years. For difficult applications such as salt water disposal, to transfer pumps used onboard oil tankers, to fire pumps used within refineries, the Pentair family of products are used in many various applications within the oil and gas industry.

From onshore production to the deep waters of offshore production and back, the Pentair family of brands is by your side and can support the ever-growing needs of this exciting market.

The next time you're in need of a pump for your oil and gas application, think of the Pentair family of products.



Pentair brands have served this industry throughout the years with reliability and confidence.

AURORA®

AURORA® EDWARDS SERIES

AURORA® LAYNE/VERTI-LINE SERIES

FAIRBANKS NIJHUIS™

MYERS® APLEX SERIES

WWW.AURORAPUMP.COM | WWW.FAIRBANKSNIJHUIS.COM | WWW.MYERSAPLEX.COM

PENTAIR'S

Global Market Segments

TECHNICAL SOLUTIONS

Designs, manufactures, and markets products that guard and protect some of the world's most sensitive electronics and electronic equipment, as well as heat management solutions designed to provide thermal protection to temperature sensitive fluid applications.

WATER & FLUID SOLUTIONS

Designs, manufactures, markets, and services innovative water management and fluid processing products and solutions. In select geographies, Water & Fluid Solutions offers a wide variety of pumps, valves, and pipes for water transmission applications.

VALVES & CONTROLS

Designs, manufactures, markets, and services valves, fittings, automation and controls, and actuators for the industrial, food & beverage, infrastructure, and energy verticals.



NORTH AURORA FACILITY
800 AIRPORT ROAD
NORTH AURORA, ILLINOIS 60542
630-859-7000
FAX: 630-859-7060

KANSAS CITY FACILITY
3601 FAIRBANKS AVENUE
KANSAS CITY, KANSAS 66106
913-371-5000
FAX: 913-748-4025

ASHLAND FACILITY
1101 MYERS PARKWAY
ASHLAND, OHIO 44805
419-289-1144
FAX: 419-289-6658

Because we are continuously improving our products and services, Pentair reserves the right to change specifications without prior notice.

K4537 04/03/13 © 2013 Pentair Ltd. All Rights Reserved.