



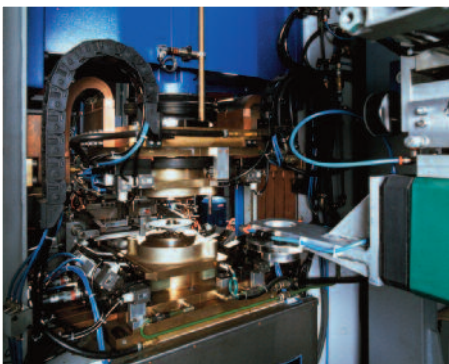
EBARA

Water and Wastewater Pump Products

Commercial
Industrial
Municipal



EBARA Corporation



Founded in 1912, EBARA Corporation is recognized as a world leader in the design, development and manufacture of industrial machinery with a predominant focus on the production of pumps, pumping systems and compressors for a wide range of applications. EBARA Corporation now operates 77 subsidiaries and 11 affiliate companies in 14 countries under three principal business groups: Fluid Machinery and Systems, Environmental Engineering and Precision Machinery.

Through Environmental Engineering, EBARA provides a full range of services from engineering, project design and construction to operation and maintenance for solid waste treatment, water treatment, gasification, incineration and other facilities. The Precision Machinery business produces semiconductor manufacturing equipment and is developing its position in the chemical mechanical polishing systems, dry vacuum pumps and high-precision technologies.

EBARA Fluid Machinery and Systems Group, EBARA's original core business, is tremendous ranging from fractional horsepower recirculation pumps to vertical mixed flow pumps with horsepower's into the thousands. EBARA's engineering and manufacturing capabilities are best demonstrated by the Futtsu plant. The plant is focused on the production of high pressure, large scale pumps and systems targeting specific applications in oil and gas, nuclear power, water and wastewater infrastructure industries with full modern test capacity to 5,000,000 GPM.

EBARA's Fujisawa plant is one of the most technologically advanced manufacturing plants for the mass production of small size pumps; including the D-series of cast iron pumps, as well as refrigerating machines, fans, blowers and boiler systems.

Standard pump products are manufactured in Italy, Brazil, China, Taiwan and other global locations and then locally assembled and tested to specific customer specifications and requirements.

EBARA blends superior engineering expertise with state of the art production techniques to produce pumps of unsurpassed quality and long life. Ebara remains the largest single brand pump company in the world and strives to develop high quality, efficient products and key system components for addressing improvements and solutions in the fields of water supply, energy and environmental issues.

EBARA Fluid Handling

EBARA Fluid Handling (EFH), the US sales and service subsidiary of EBARA Corporation, Japan, provides engineered pump, pump products and related services for the water, wastewater, commercial, municipal, energy and power industries offering reliable product knowledge, application expertise and responsive support including aftermarket replacement parts services.

With horsepower ranges up to 800 HP and capacities to 35,000 GPM, EFH's cast iron submersible pumps meet a wide range of industrial, municipal, flood control, and residential water and wastewater applications. The cast iron line of pumps includes submersible sewage, submersible sump, semi-vortex, vortex, grinder, non-clog, and dry pit models.

EFH offers a comprehensive line of corrosion resistant formed stainless steel pumps that include end suction centrifugal, multistage, and submersible sump, effluent, and sewage pumps. EBARA Fluid Handling maintains inventory that allows it to assemble, test, and ship 1/2 to 150 HP cast iron submersible pumps in 5 to 14 working days, and as well, offer a 24-hour Quick Ship program on most stainless steel pumps and parts. The Rock Hill facility includes a new 81,000 gallon computer-aided testing area capable of handling large-scale pump models both in wet and dry pit configurations up to 350 HP.

EBARA pump service and parts are available through an extensive service network throughout North America to assist customers in replacement of parts or complete pumps and motors.

Recognizing the continued strain on water and wastewater facilities and infrastructures with increased maintenance, energy, and environmental demands and costs, EBARA Fluid Handling strives to deploy the best water, wastewater pumps, pump products, and technologies to meet these requirements.



Model CDU *, CDX



Specifications

Suction Size:	1 1/4" to 1 1/2"
Discharge Size:	1"
Range of HP:	to 3 HP
Capacity:	to 95 GPM
Head:	to 144 ft.
Liquid:	Clean water

End suction centrifugal

Applications

- Irrigation
- Plant services
- Liquid transfer
- Water supply systems
- Ultrapure water systems
- Air conditioning systems
- Water reclamation and treatment

Model 3U *



Specifications

Suction Size:	2" to 3"
Discharge Size:	1 1/4" to 2 1/2"
Range of HP:	to 30 HP
Capacity:	to 650 GPM
Head:	to 250 ft.
Liquid:	Clean water

End suction centrifugal

Applications

- Irrigation
- Plant services
- Liquid transfer
- Water supply systems
- Ultrapure water systems
- Air conditioning systems
- Water reclamation and treatment

Model JEU *



Specifications

Suction Size:	1 1/4"
Discharge Size:	1"
Range of HP:	to 1 1/2 HP
Capacity:	to 18.5 GPM
Head:	to 190 ft.
Liquid:	Clean water

Self-priming jet pump

Applications

- Plant services
- Pressure boosting
- Water supply systems
- Ultrapure water systems
- Water reclamation and treatment
- Aqueous cleaning



* NSF/ANSI 61 Annex G listed: Model CDU, Model 3U, Model JEU

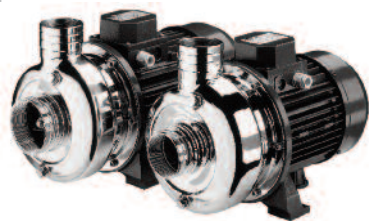


Model 2CDXU, 2CDU***2-stage end suction centrifugal****Specifications**

Suction Size:	1 1/4" to 1 1/2"
Discharge Size:	1"
Range of HP:	3/4 to 5 HP
Capacity:	to 66 GPM
Head:	to 245 ft.
Liquid:	Clean water

Applications

- Plant services
- Liquid transfer
- Reverse osmosis
- Water supply systems
- Ultrapure water systems
- Water reclamation and treatment
- OEM equipment application

Model DWO**Open impeller end suction centrifugal****Specifications**

Suction Size:	2" to 2 1/2"
Discharge Size:	2"
Range of HP:	1.5 to 4 HP
Capacity:	to 250 GPM
Head:	35 to 65 ft.
Liquid:	suitable for suspended solids in dirty water to 3/4" (spherical)

Applications

- Plant services
- Food process
- Beverage process
- Dirty liquid handling
- OEM equipment application
- Water reclamation and treatment

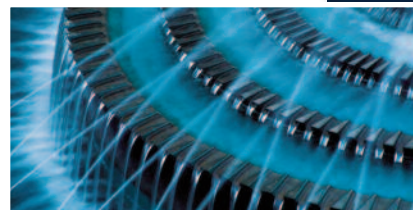
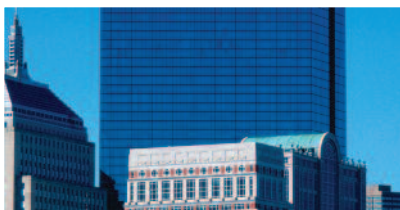
Model EVMU *, EVMUL *, EVMUG**Vertical multistage****Specifications**

Suction Size:	1 1/4" to 4"
Discharge Size:	1 1/4" to 4"
Range of HP:	to 50 HP
Capacity:	to 390 GPM
Head:	to 930 ft.
Liquid:	Clean water

Applications

- Boiler feed
- HVAC
- Filtration
- Reverse osmosis
- Washing systems
- Fire fighting
- Filtration
- Irrigation
- Pressure/water boosting
- Hot/cold water circulation

NSF * NSF/ANSI 61 Annex G listed: Model 2CDU, Models EVMU 3-18, EVMUL 3-64



Model EPD, Optima



Specifications

Discharge Size:	1 1/4" to 1 1/2"
Range of HP:	to 1 1/2 HP
Capacity:	to 86 GPM
Head:	to 61 ft.
Max. solid diameter:	3/8"

Single and three phase models; manual or automatic

Sump, drainage

Applications

- Drainage (*basements, sumps, excavation*)
- Seepage (*residential, commercial, industrial*)
- Effluent and containment transfer
- Emptying (*pools, water storage structures*)

Model DWU, DWXU



Specifications

Discharge Size:	2"
Range of HP:	to 3 HP
Capacity:	to 235 GPM
Head:	to 74 ft.
Max. solid diameter:	2"

Single and three phase models; manual or automatic

Sump, effluent

Applications

- Water
- Wastewater
- Drainage

Model DMLEU



Specifications

Discharge Size:	3", 4", 6"
Range of HP:	3 to 30 HP
Capacity:	to 1345 GPM
Head:	to 136 ft.
Max. solid diameter:	3"

Three phase (only) models available

Submersible water/wastewater

Applications

- Commercial/Industrial water and wastewater
- Drainage (*household, industrial*)
- Dewatering

Model EBG, EBHG



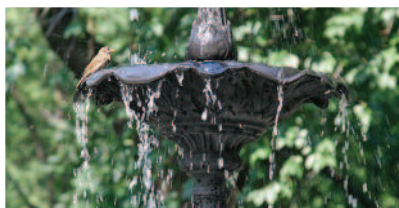
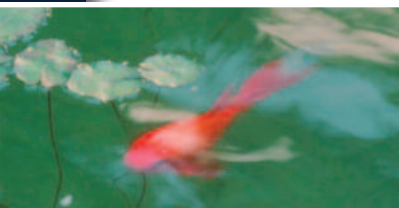
Specifications

Discharge Size:	1 1/4", 2 1/2", 3"
Range of HP:	to 7 1/2 HP
Capacity:	to 180 GPM
Head:	to 170 ft.

Submersible grinder

Applications

- Small scale pressurized sewage transfer systems
- Drainage transfer
- Commercial/household sewage and drainage transfer
- Available in packaged basin systems



Model DSU, DSHU



Specifications

Discharge Size:	2", 3", 4"
Range of HP:	to 10 HP
Capacity:	to 390 GPM
Head:	to 126 ft.

Single and three phase models

Submersible sump

Applications

- Water
- Dewatering
- Drainage
- Construction

Model DVSU, DVSHU



Specifications

Discharge Size:	2", 3"
Range of HP:	to 5 HP
Capacity:	to 250 GPM
Head:	to 80 ft.
Max. solid diameter:	2 1/4"

Single and three phase models

Submersible semi-vortex sewage

Applications

- Water
- Wastewater
- Drainage

Model DLU



Specifications

Discharge Size:	2", 3", 4"
Range of HP:	to 5 HP
Capacity:	to 400 GPM
Head:	to 66 ft.
Max. solid diameter:	3"

Single and three phase models

Water/wastewater submersible sump

Applications

- Sewage
- Water
- Wastewater
- Drainage (*household, industrial*)
- Irrigation

Model DWP, DWPM



Specifications

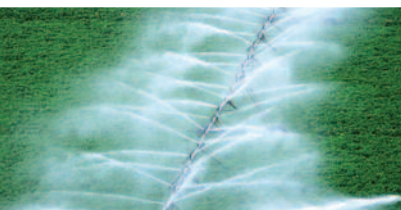
Discharge Size:	2", 3", 4", 6", 8"
Range of HP:	to 58 HP
Capacity:	to 2000 GPM
Head:	to 340 ft.

Single and three phase models

Submersible dewatering

Applications

- Dewatering
- Drainage
- Construction
- Mining
- Power stations
- Steel mills
- Aquaculture



Model EFQT, EFQU



Specifications

Discharge Size:	2" to 12"
Range of HP:	1 to 125 HP
Capacity:	to 3400 GPM
Head:	to 210 ft.
Max. solid diameter:	3" (EFQT), 1 1/4" (EFQU)

Self-priming trash pump

Applications

- Water
- Wastewater
- Sewage
- Slurry

Model DVU



Specifications

Discharge Size:	2", 3", 4"
Range of HP:	to 5 HP
Capacity:	to 430 GPM
Head:	to 50 ft.
Max. solid diameter:	4"

Water/wastewater vortex non-clog

Applications

- Water (*municipal/industrial*)
- Wastewater (*municipal/industrial*)
- Sewage
- Drainage (*household, industrial*)
- Stock breeding

Single and three phase models available

Model DGUI, DGFU



Specifications

Discharge Size:	1 1/4", 2"
Range of HP:	to 5 HP
Capacity:	to 80 GPM
Head:	to 150 ft.
Max. solid diameter:	3"

Submersible grinder

Applications

- Small scale pressurized sewage transfer systems
- Drainage transfer
- Commercial/household sewage and drainage transfer

Single and three phase models; FM explosion proof available

Model DLFU



Specifications

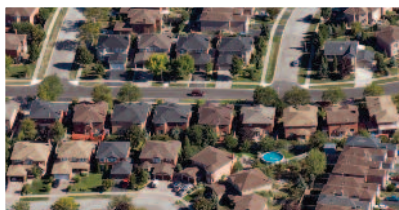
Discharge Size:	2" to 12"
Range of HP:	2 to 60 HP
Capacity:	to 4000 GPM
Head:	to 243 ft.
Max. solid diameter:	3 1/4"

Submersible non-clog water/wastewater

Applications

- Industrial
- Municipal
- Water
- Wastewater
- Flood control

FM explosion proof available



Model DVFU**Submersible vortex non-clog water/wastewater****Specifications**

Discharge Size:	2" to 6"
Range of HP:	2 to 30 HP
Capacity:	to 1200 GPM
Head:	to 121 ft.
Max. solid diameter:	5"

FM explosion proof available

Applications

- Industrial
- Municipal
- Water
- Wastewater
- Sewage
- Drainage
- Stock breeding

Model DDLFU**Water/wastewater dry pit non-clog****Specifications**

Discharge Size:	4" to 12"
Range of HP:	to 60 HP
Capacity:	to 4000 GPM
Head:	to 243 ft.
Max. solid diameter:	3 1/4"

FM explosion proof available

Applications

- Industrial
- Municipal
- Water
- Wastewater

Model DSC4, DSCA4, DSC**Large sewage/wastewater submersible non-clog****Specifications**

Discharge Size:	6" to 24"
Range of HP:	to 800 HP
Capacity:	to 35,000 GPM
Head:	to 300 ft.
Max. solid diameter:	8 1/8"

FM explosion proof available; Dry-pit type available; Non-sewage cooled available

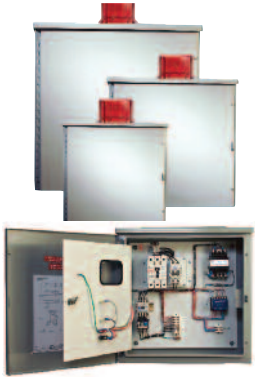
Applications

- Industrial
- Municipal
- Water
- Wastewater
- Floodwater



EBARA Fluid Handling provides complete solutions for a wide range of applications across various industries and offer additional accessories from control panels to drives, basin packages, lifting chains, adapters, guide brackets, hoists and hatch covers for water and waste water treatment applications submittal and bid packages.

Control Panels



Features

- Basic, standard or custom
- All Nema rated enclosures; Components are UL Listed
- IEC or Nema starters
- Separate alarm and control circuits
- Build to engineers' or customer specifications
- Build to customer specifications

Applications

- Industrial/Municipal
- Water
- Wastewater

Single / Multiple flow controller



Features

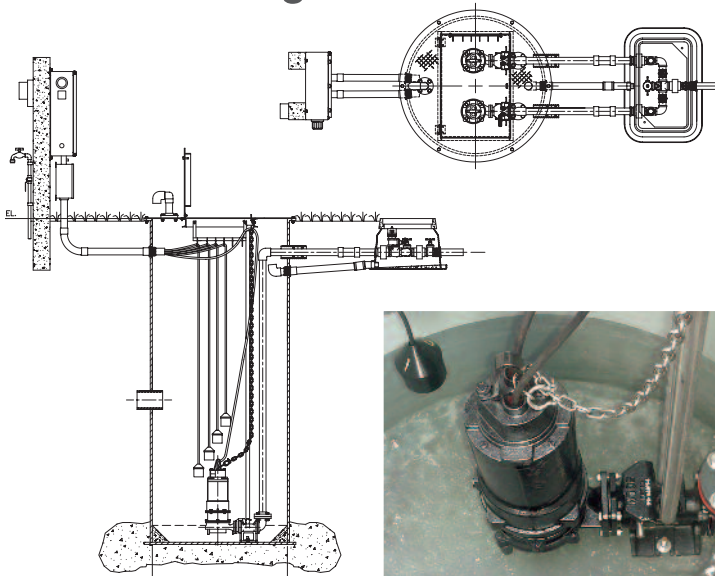
- Built-in SCADA software - program, startup, system trending, status readout and diagnose
- Pump applications simulator - simulate drive parameters
- Pump specific operator keypad
- Digital output monitoring
- Simplex - simple setup
- Duplex/Triplex - Automatically starts and stops lead/lag pumps on demand
- Maintains constant system pressure
- Built to UL 508A Standards
- Serial communications options

Applications

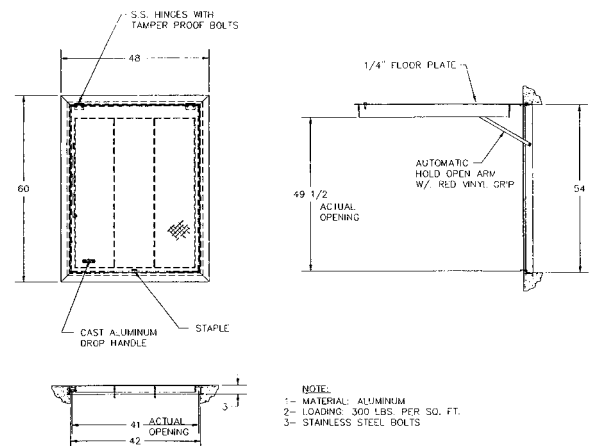
- Booster pump systems
- Commercial/Residential Irrigation
- Submersible deep wells
- Fluid storage tanks
- Metering pumps
- Sludge pumps
- Settling ponds



Basin Packages



Hatch Covers





EBARA



Your Local EBARA representative:

Engineered for Performance



EBARA Fluid Handling

1651 Cedar Line Drive, Rock Hill, SC 29730
t (803) 327-5005 | f (803) 327-5097

www.pumpsebara.com

©2011 EBARA International Corporation, All rights reserved.