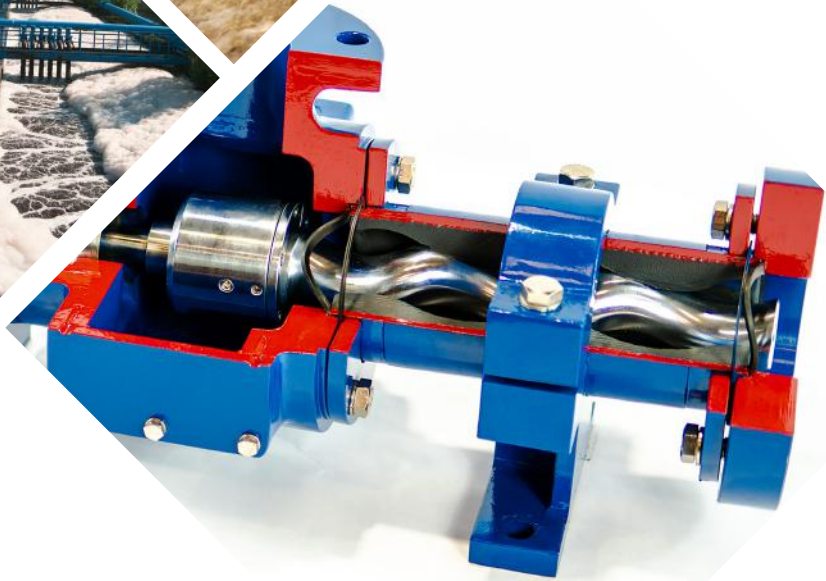
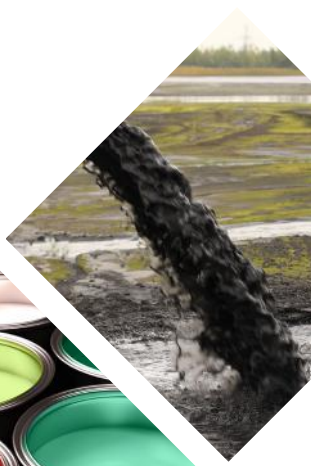




MM - SERIES PROGRESSIVE CAVITY PUMPS
RELIABILITY AT A SUPERIOR VALUE



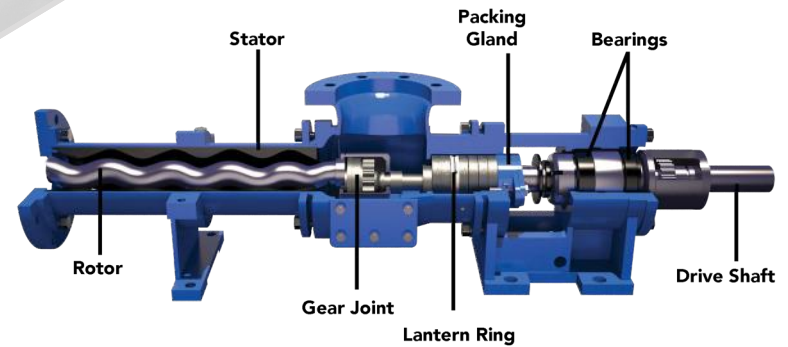
MXQ
9203 Zaka Rd.
Houston, Texas 77064
www.mxq-usa.com

MXQ MM - Series Pump

The MXQ MM-Series progressive cavity pump is built with rugged gear-type universal joints, which is an effective solution to handle heavy radial thrust loads. This design ensures the best performance with very minimal maintenance, low wear & tear of rotating parts, and longer life of the pump. These high quality gear joints and materials of construction create a very robust, reliable option for your application. MXQ MM-Series pumps are 100% equivalent to Moyno®* 2000 series progressive cavity pumps.

Featured Benefits

- Heavy duty gear joints are used to withstand pressure and thrust loads.
- Stuffing box can accommodate single/double mechanical seal or packing.
- Uses grease packed roller bearings to extend pump life.
- Sturdy castings reduce vibration to shaft and bearings.
- Various materials of construction available.
- Suction chamber can rotate 360° for easier installation.
- Inspection ports for efficient cleaning.
- Non-pulsating flow
- Accurate, repeatable flow
- Head independent of pump speed
- Low NPSH requirement
- Self-priming
- High suction lift up to 28 feet
- Low shear
- No valves to clog or stick
- Reversible
- No timing gear adjustments
- High volumetric and mechanical efficiency
- Smooth fluid discharge
- Ideal for metering application
- Easy to regulate
- Superior abrasion resistance



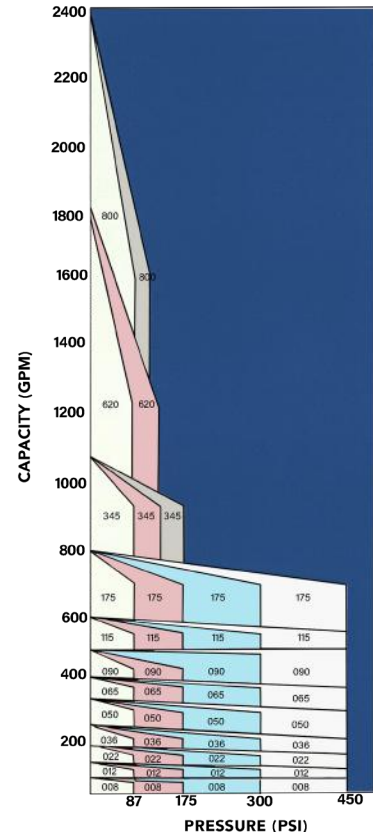
Pumping Versatility

MXQ MM-Series pumps are available with:

- Pressures up to **500 PSI**
- Viscosities over **1,000,000 CpS**
- Flows up to **2,000 GPM**
- Temperatures up to **350 °F**
- Solids up to **2.8" in diameter**
- Wide selection of materials of construction

Typical Applications

- Sewage lift stations and headworks
- Primary and tertiary sedimentation
- Grit removal
- Nitrification
- Thickening and conditioning
- De-watering
- Multiphase fluid transfer
- Adhesives
- Slurries
- Chemical metering
- Polymer
- Food and beverage waste
- Starch, slurries, and coatings
- Leaching/ neutralization
- Flocculants



Special Options For Every Application

- Flush gland
 - Allows gland packing leakage to be flushed away from the pump preventing severe damage to seals and packing.
- Foreign particle deflector
 - Prevents clogging around pump coupling rod and rotor head.
- Shaft sleeve design
 - Protects the drive shaft from high wear and tear from abrasive media.
- Dry-running protection
 - Prevents dry running and over pressure situations. Suitable pressure switch or dry running sensors at stator are available as options.

Materials of Construction	
	Standard Materials
Pump Housing	Cast Iron, Cast Steel, CF8, CF8M
Internals (Including Rotor)	Alloy Steel, Tool Steel, AISI 304, AISI 316
Stators	EPDM (to 260°F) Fluoroelastomer (to 350 °F) Nitrile (to 210 °F) Natural Rubber (to 185°F)

*Moyno® is a registered trademark of National Oilwell Varco (NOV). MXQ is not associated with, endorsed by, or sponsored by NOV.

†Other materials and special configurations available upon request.