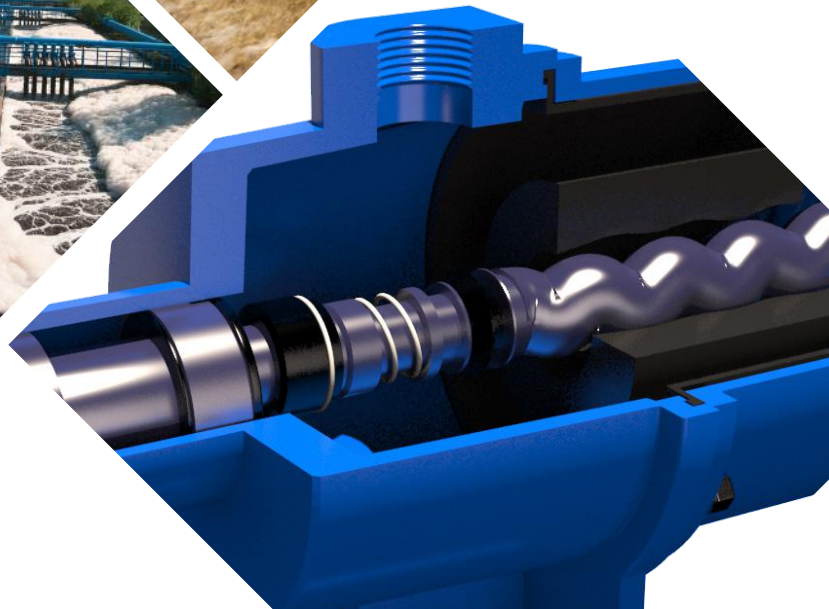
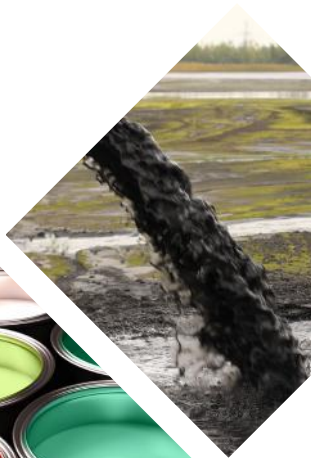
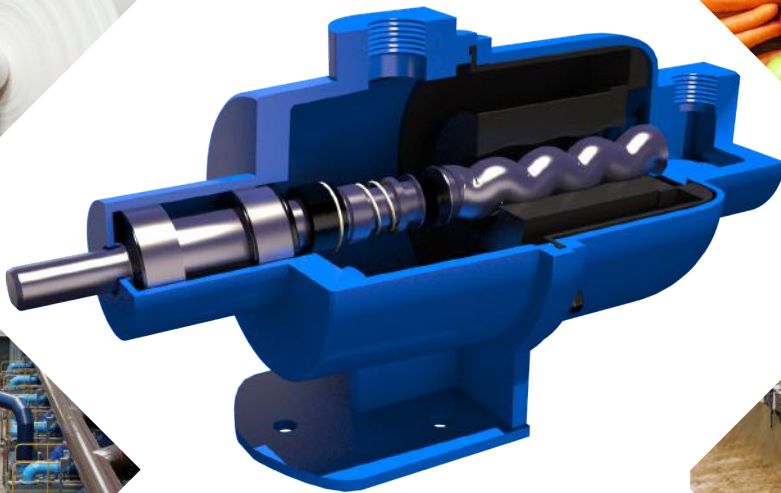




MW - SERIES PROGRESSIVE CAVITY PUMPS
RELIABILITY AT A SUPERIOR VALUE



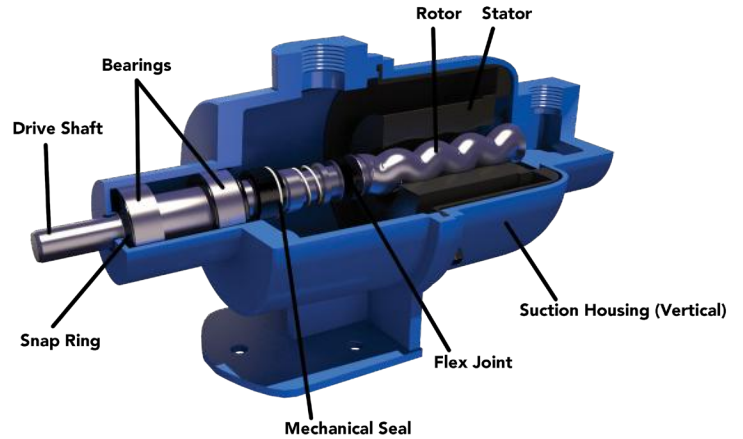
MXQ
9203 Zaka Rd.
Houston, Texas 77064
www.mxq-usa.com

MXQ MW - Series Pump

MXQ MW-Series pumps are compact and light weight, designed for transfer duties in various applications. They feature a flex-joint design and provide excellent suction lifts up to 26 feet on water. Many of our customers use these pumps for chemical injection applications. The MXQ MW-Series pump is 100% equivalent to the Moyno®* 34401 wobble motor pump.

Typical Applications

- Abrasive chemicals and slurries
- Viscous products and heavy solids
- Dirty oil, oily water separators
- Drainage
- Drum transfer
- Emulsions
- Fabric coatings
- Feed additives
- Grain mash and lime slurries
- Industrial waste, sewage sampling
- Irrigation
- Lubricants
- Non-aggressive chemical
- Polymer injection
- Tank sump cleaning



Pumping Versatility

MXQ MW-Series pumps are available with:

- Flows up to 15 GPM
- Pressures up to 50 PSI
- Suction up to 26 Ft

Featured Benefits

- Compact design
- Reliable performance
- Simplified construction
- Self-priming
- Smooth and silent running
- Accurate dosing
- Low-shear
- Low NPSH requirement
- Steady, continuous flow
- Handles abrasive fluids

Materials of Construction	
	Standard Materials
Pump Housing	Ductile Iron Stainless Steel
Internals (Including Rotor)	Stainless Steel
Stators	EPDM Fluoroelastomer Nitrile High Nitrile Natural Rubber Chloro-Sulphonated Rubber

*Moyno® is a registered trademark of National Oilwell Varco (NOV). MXQ is not associated with, endorsed by, or sponsored by NOV.

†Other materials and special configurations available upon request.